

Object: DELL Optiplex GX-520

Since August 2005 the DELL Optiplex GX-280 is end of live.
So we replace this machine with a new model of DELL Optiplex-PC's, it's the GX 520.

The new PC-System is similar to the GX280. The main difference is a new miditower-case and the new Intel chipset (945G).

Just for your information:

Here are some more features since using the GX280/GX520:

- 2 S-ATA harddrives, one in a removable frame one fix inside the PC for spare
- new removable frame for S-ATA-harddrives, black
- upgrade to 512 MB RAM
- DVD-ROM/CD-RW Combo drive, Nero Suite burning software
- new BIOS-version and settings
- no PS/2 connectors for keyboard and mouse
- 4 operating-system-images on hide-partitions

New miditower case:

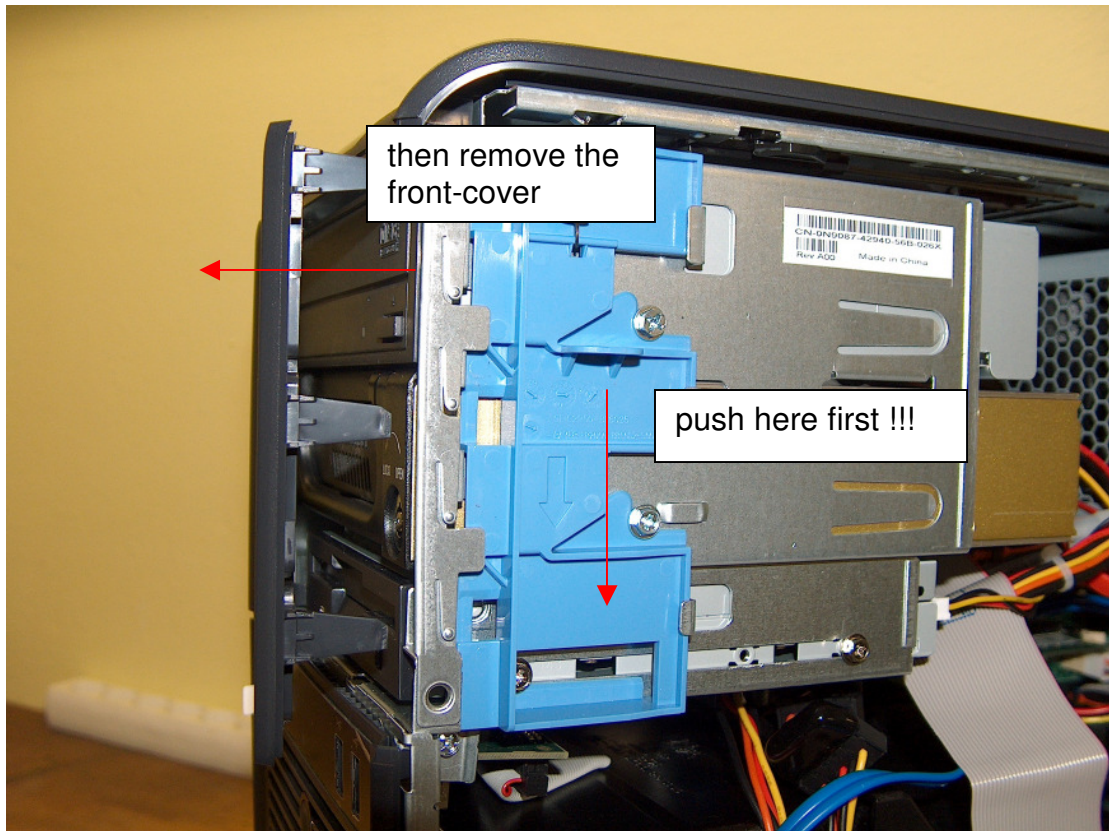
Since the GX520 we have a complete new case



How to open the case?



How to remove a DVD-Drive, Floppy or harddrive?



S-ATA-harddrives:

The new S-ATA-harddrives replaces the older IDE-harddrives.

There are 2 connectors on the motherboard with a label SATA0 and SATA2.

Jumpering the S-ATA-harddrives is not necessary anymore.

Every harddrive has it's own connector and own cable to the motherboard. One harddrive and one cable for one connector (SATA0 or SATA2)

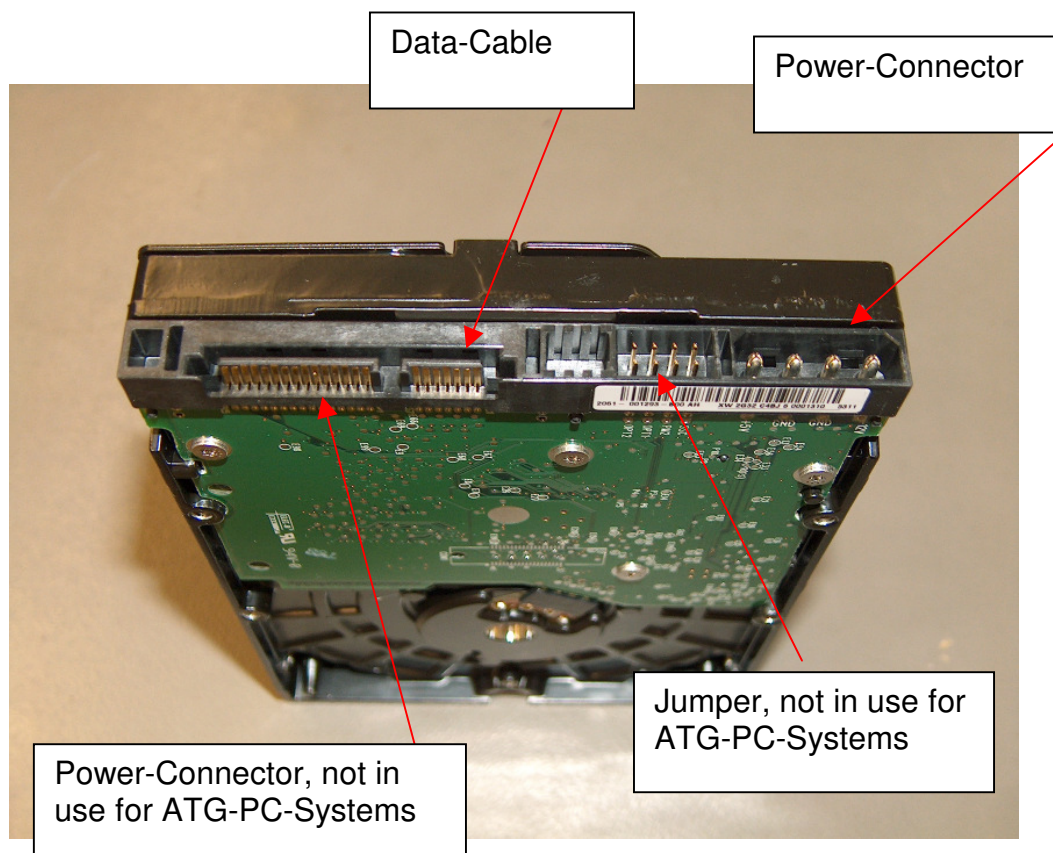
SATA0 is the main-harddrive in the removable frame. SATA2 is the spare harddrive and fix placed in the PC.

The power-switch on the rear side of the PC is still working in the same way like before.

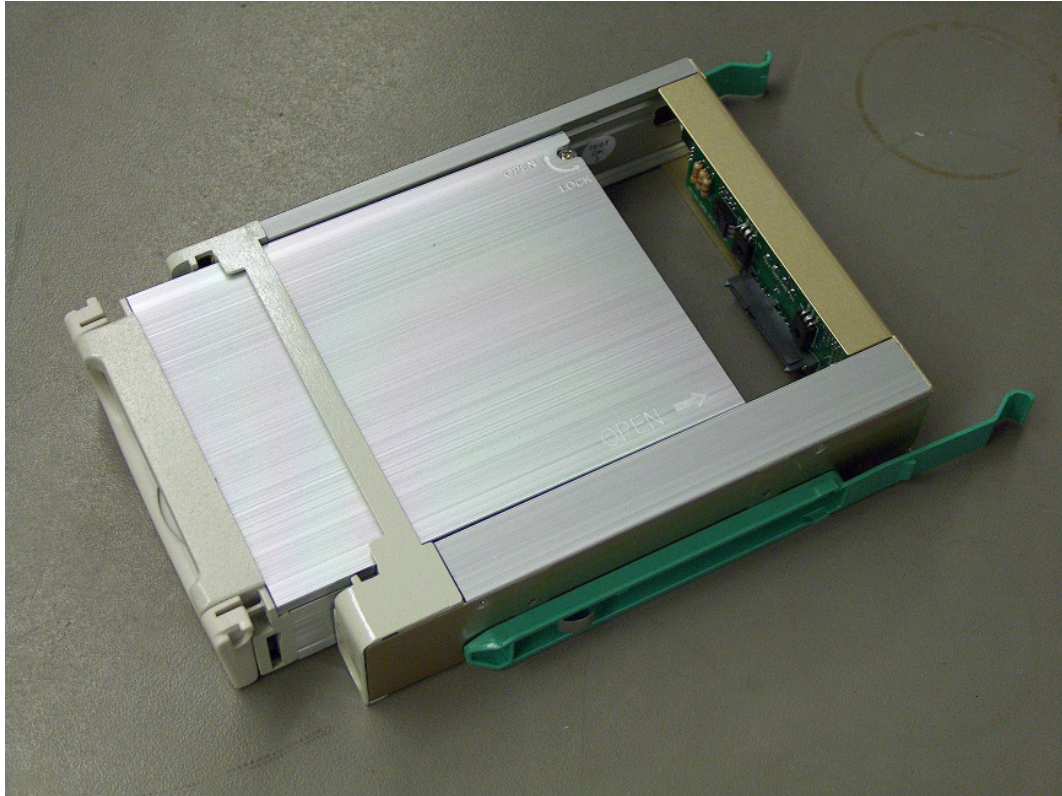
It's possible to clone like an IDE-harddrive. It's also possible to clone a S-ATA-harddrive to an IDE-harddrive and reverse.

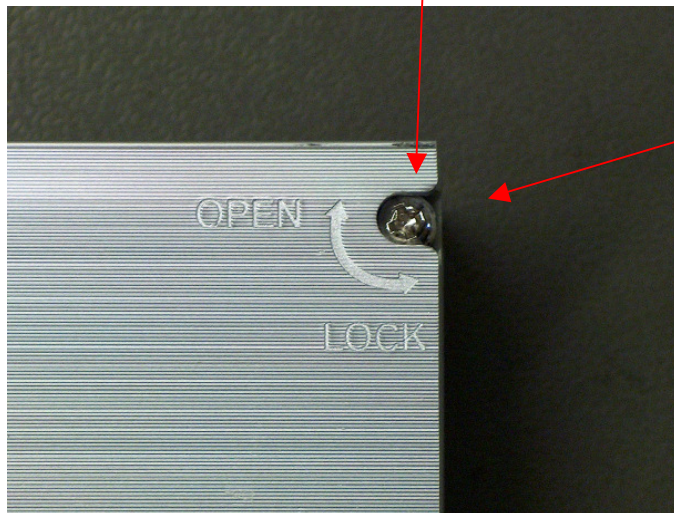
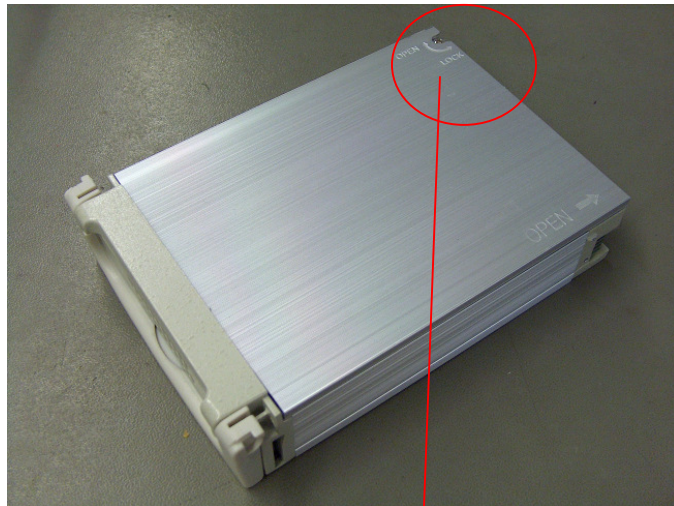
The GX-280 has additional an IDE-bus for 2 devices. One device is the DVD-ROM/CD-RW-Combo drive jumpered as Master and one free connector for an IDE-harddrive.

So the customer is able to connect an old harddrive to the GX-280 to boot or clone a harddrive.



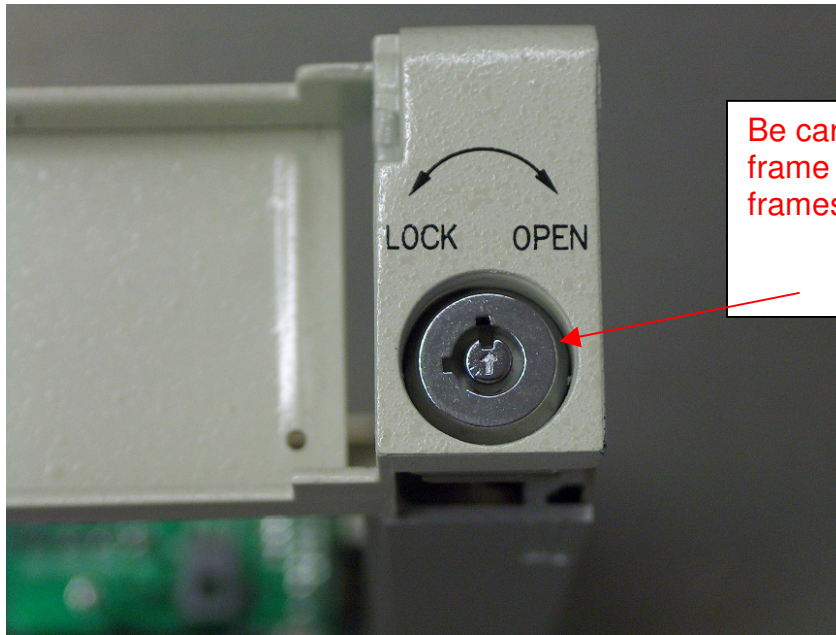
Removable Frame:





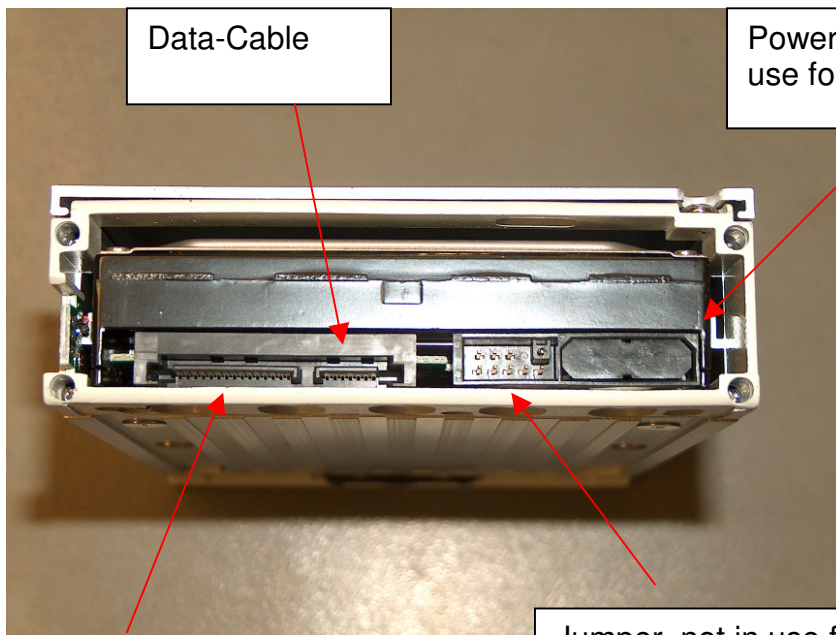
Screw to open
the frame





Be careful the direction to lock the frame is different to the old IDE-frames !!!

Carrier of removable Frame with harddrive inside



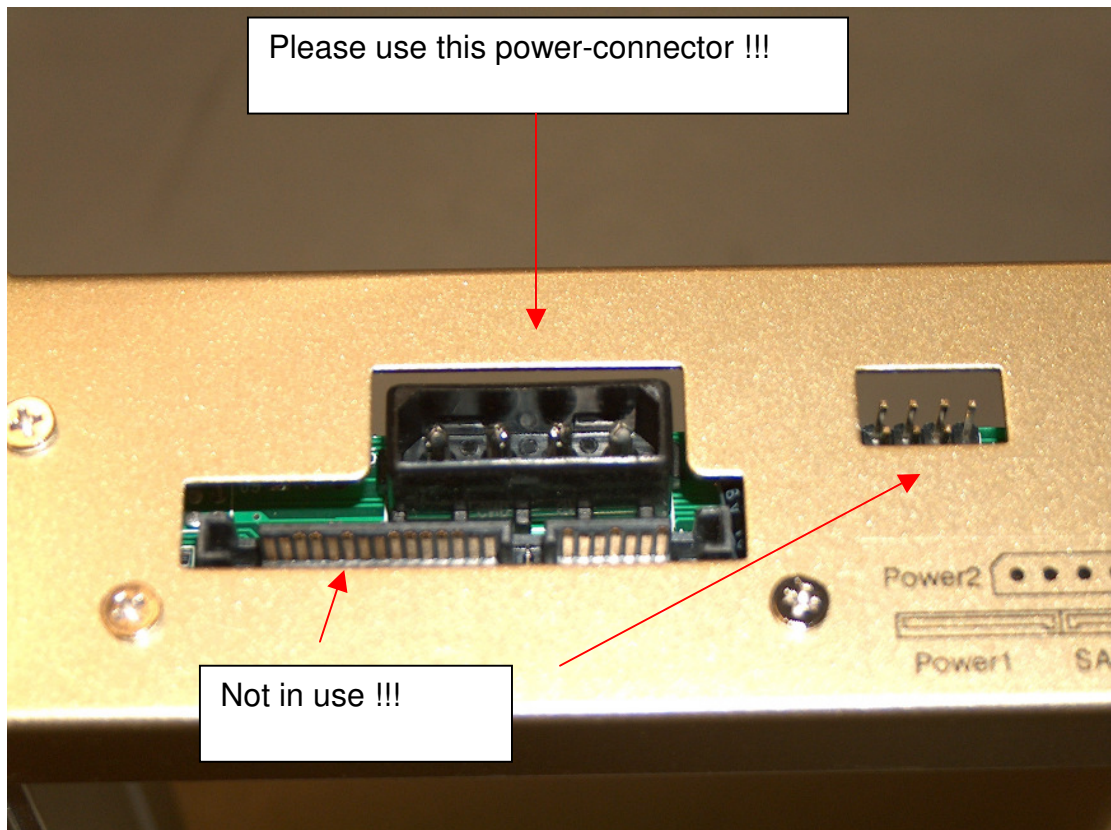
Data-Cable

Power-Connector, not in use for ATG-PC-Systems

Power-Connector

Jumper, not in use for ATG-PC-Systems

Rearside of the removable Frame



DVD-ROM/CD-RW Combo drive:

Jumpered as **Master** on the IDE-bus. Can read DVD and burn CD's (max 800MB).
Burning software is Nero Suite.

BIOS-Settings :GX 520:

Entering Setup by pressing F2 during bootup

System:

System Info:	no settings
Processor Info:	no settings
Memory Info	no settings
Date/Time:	select your time and date
Boot Sequence:	1. Onboard or USB Floppy Drive 2. Onboard or USB CD-ROM Drive 3. Onboard SATA Hard-Drive 4. Onboard IDE Hard Drive

Drives: (working with main harddrive in removable frame)

Diskette Drive:	Internal
Drive 0: SATA-0	ON
Drive 1: SATA-2	OFF
Drive 2: PATA-0 (IDE-Master)	ON (DVD-ROM-CD/RW-drive)
Drive 3: PATA-1(IDE-Slave)	OFF (not in use)
SATA Operation:	Normal
SMART Reporting:	OFF

Drives: (working with spare harddrive)

Diskette Drive:	Internal
Drive 0: SATA-0	OFF
Drive 1: SATA-2	ON
Drive 2: PATA-0 (IDE-Master)	ON (DVD-ROM-CD/RW-drive)
Drive 3: PATA-1(IDE-Slave)	OFF (not in use)
SATA Operation:	Normal
SMART Reporting:	OFF

Drives: (cloning harddrives)

Diskette Drive:	Internal
Drive 0: SATA-0	ON
Drive 1: SATA-2	ON
Drive 2: PATA-0 (IDE-Master)	ON (DVD-ROM-CD/RW-drive)
Drive 3: PATA-1(IDE-Slave)	OFF (not in use)
SATA Operation:	Normal
SMART Reporting:	OFF

Onboard Devices:

Integrated NIC:	ON
Integrated Audio:	ON
USB Controller:	ON
Front USB Ports :	ON
PCI-Slots:	ON
LPT Port Mode:	ECP
LPT Port Adress:	378h
LPT Port DMA:	OFF
Serial Port #1:	Auto

Video:

Primary Video:	Auto
Video Memory Size.	8MB

Performance:

Hyper-Threading:	OFF
HDD Accoutic Mode:	Bypass

Security:

Admin Password:	no settings
System Password:	no settings
Drive 0 Password:	
Drive 1 Password:	
Drive 2 Password:	
Drive 3 Password:	
Password Changes:	Unlocked
Chassis Intrusion:	OFF
Intrusion Alert:	no settings
Execute Disable:	OFF

Power Management:

AC Recovery:	ON
Auto Power On:	OFF
Auto Power Time:	no settings
Low Power Mode:	OFF
Remote Wakeup:	OFF
Suspend Mode:	S3

Maintenance:

SERR DMI Message:	
Load Defaults:	no settings
Event Log:	no settings

POST Behavior:

Fast Boot:	ON
NumLock Key:	ON
POST Hotkeys:	Setup & Boot Menu
Keyboard Errors:	Report

4 operating-system-images on hide-partitions:

Since GX280 we have the possibility to create a basic operating-system-installation in a few minutes without do an installation with an Microsoft installation CD. All hardware drivers and ATG-specific configurations are already done.

In case of destroying your installation or if you want to use a different operating-system or language you can copy a preconfigured operating system to your main partition.

Every GX280-PC-System has 5 partitions on every harddrive (main- or spare-harddrive)
Partition 2-5 are normaly hide-partitions by deleting the drive-letter.

1. Partition	primary partition approximately 60GB (your current os)
2. Partition	logical partition WIN2000english
3. Partition	logical partition WIN2000german
4. Partition	logical partition WINXP prof english
5. Partition	logical partition WINXP prof german

All GX280 have a operating-system-license for WINXP, so it's no problem to use a WIN2000 operating system on this PC. This is conform with the EULA of Microsoft. We have the permission to use this kind of installation from DELL-Germany !!!!

Default operating system is WIN2000english (April 2005).
So if you want upgrade to WINXP english you can copy with Ghost the WINXP english operating-system to the main-partition.

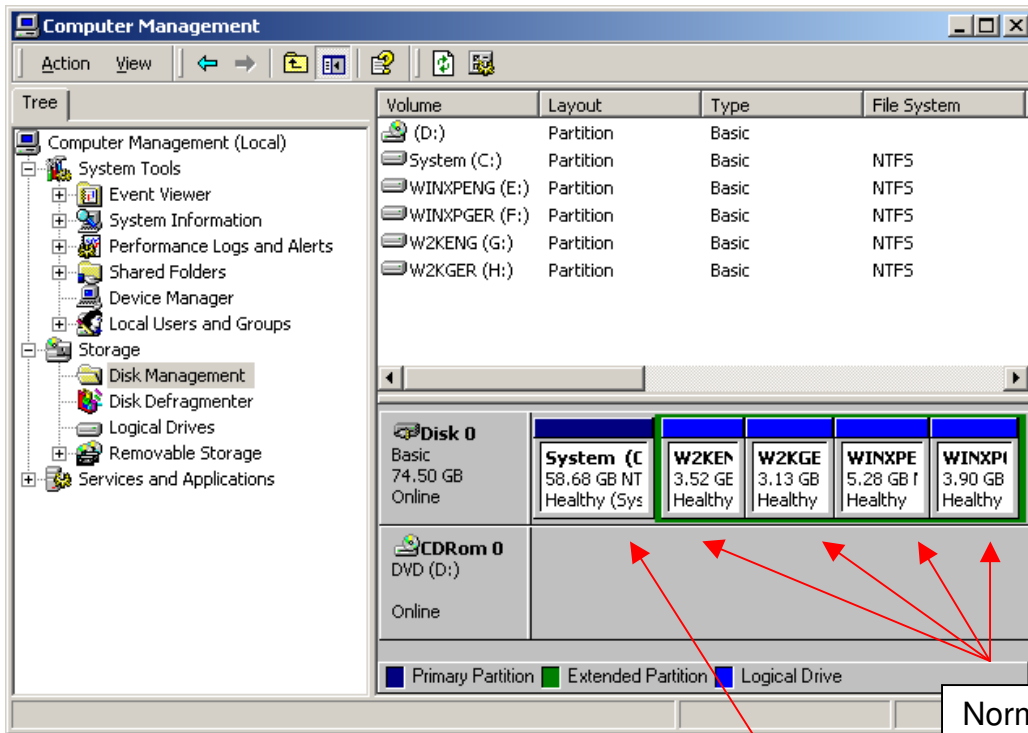
Boot with the Ghost-floppy and do a copy-process from **partition to patition**

Source-partition is the partition with the name WINXPenglish
Destination-partition is the partition with the biggest size (appr. 60GB, normaly the first one)

After the copy-process (5-6 min) you can boot directly the new operating system. Now you see all 5 partitions in the Explorer.

Please hide the partitions in the following way

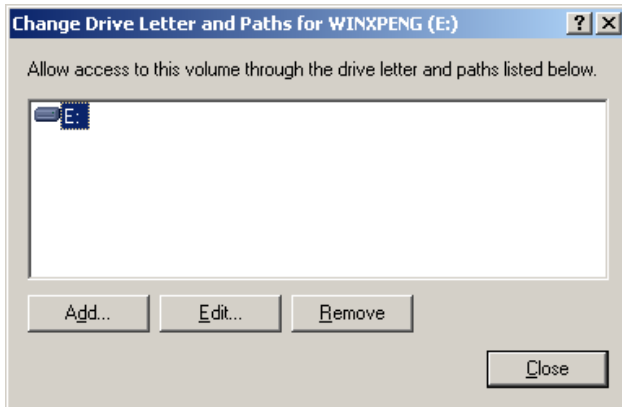
START – Settings - Control Panel - Administrative Tools – Computer Management – Disk Management



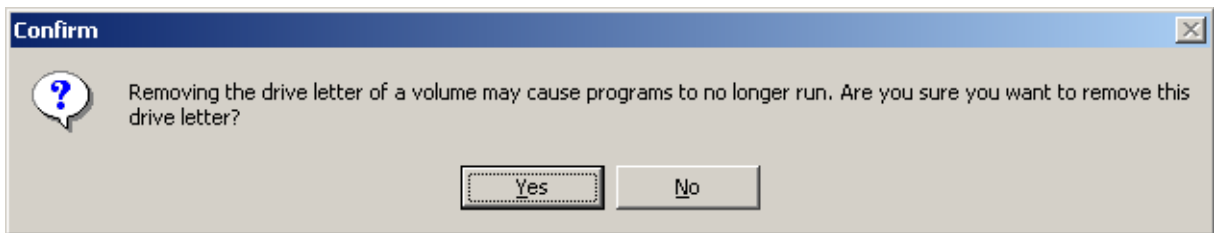
Normally hide partitions

Main-partition

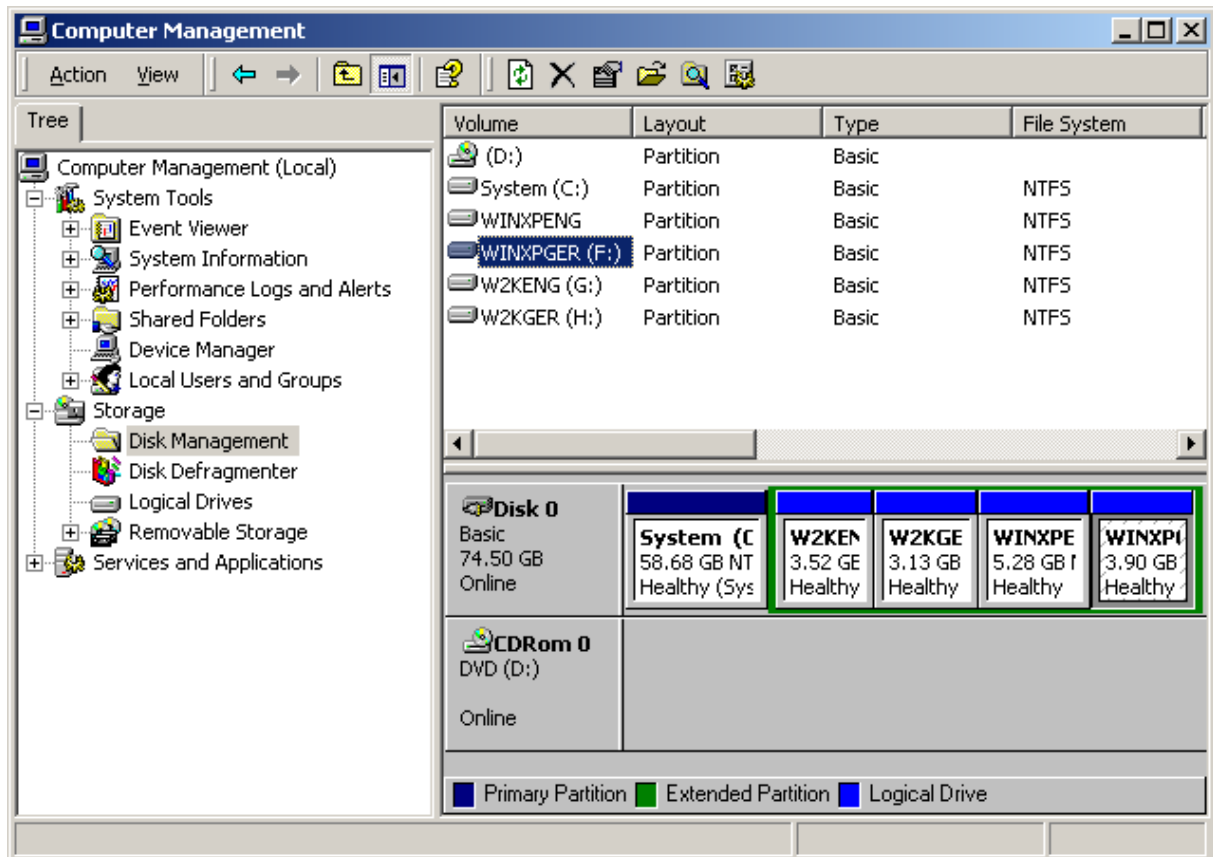
To hide partition E: do the following steps:
Mark partition E: and click right mouse button



click to remove



click to YES



Drive E: is not active anymore. The partition is still there but invisible in the Explorer.

Do the same procedure for all partition, but not for the partition C:
Be sure that the CD-Burner is Drive D: (otherwise change it to D:)

