

Documentation about creating backups and cloning of ATG-DELL-PC's

After every installation at the customer the ATG-service-people should create a backup from the c:\-drive on the backup-partition and additional a clone on the backup-disk

So we have everytime the current level of customer-installation on 4 different partitions

1. on the original c:\-drive
2. on the backup-partition of main-harddrive
3. on the c:\-drive of the spare-harddisk
4. on the backup-partition of the spare-harddrive

Part 1:

Creating backups after customer installation (copy partition to partition):

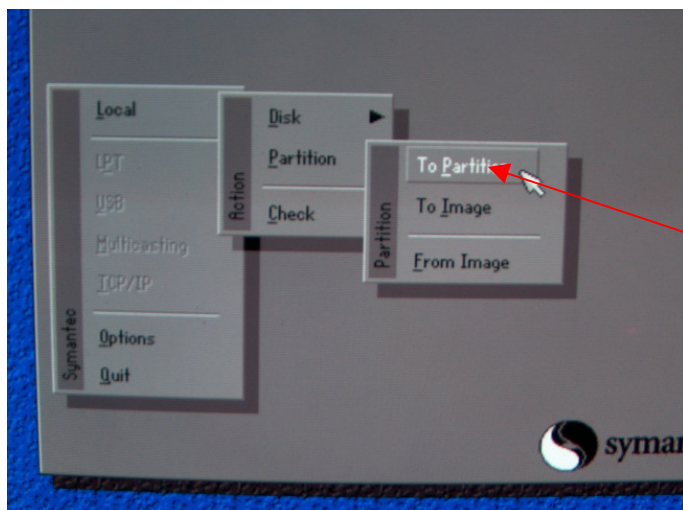
After everything is configured you should shutdown the pc and insert the Ghost-boot-Floppy or the Ghost-boot-CD.

Make sure that your first Boot-device is Floppy-drive or CD-drive !!!!!

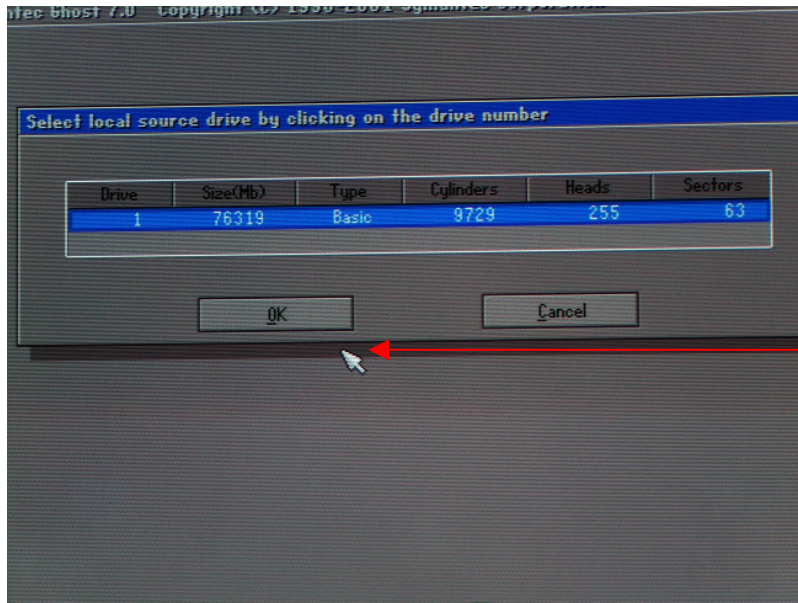
You get the Ghost-startup-screen



Click to
Ok !!!

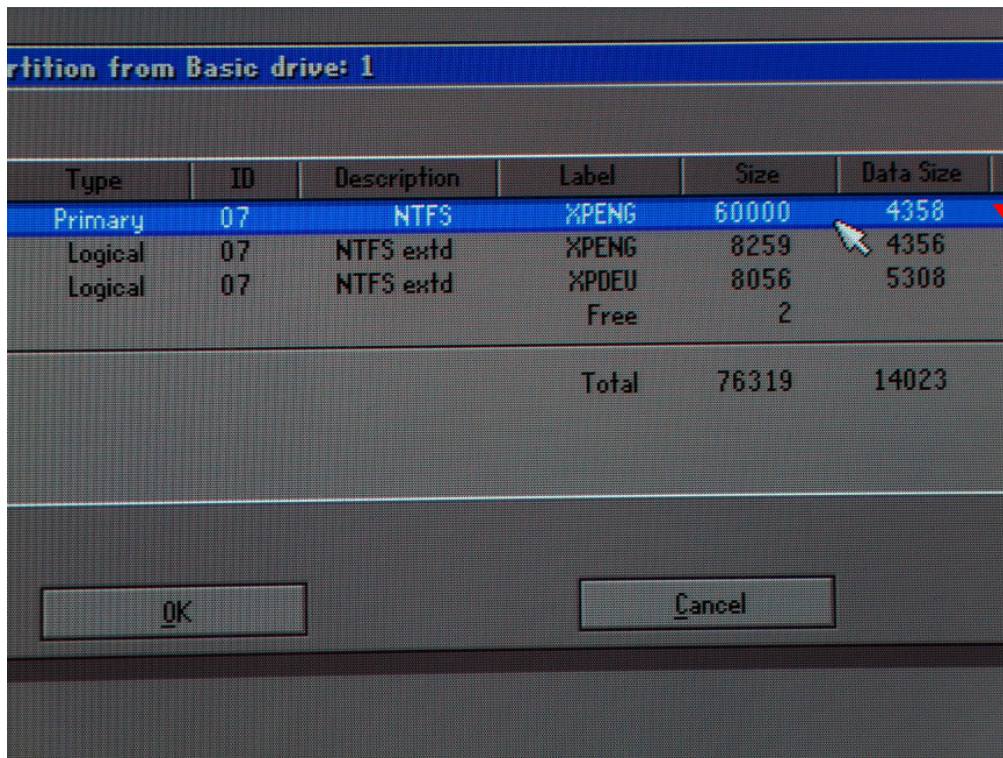


Click to
Local
Partition
To Partition

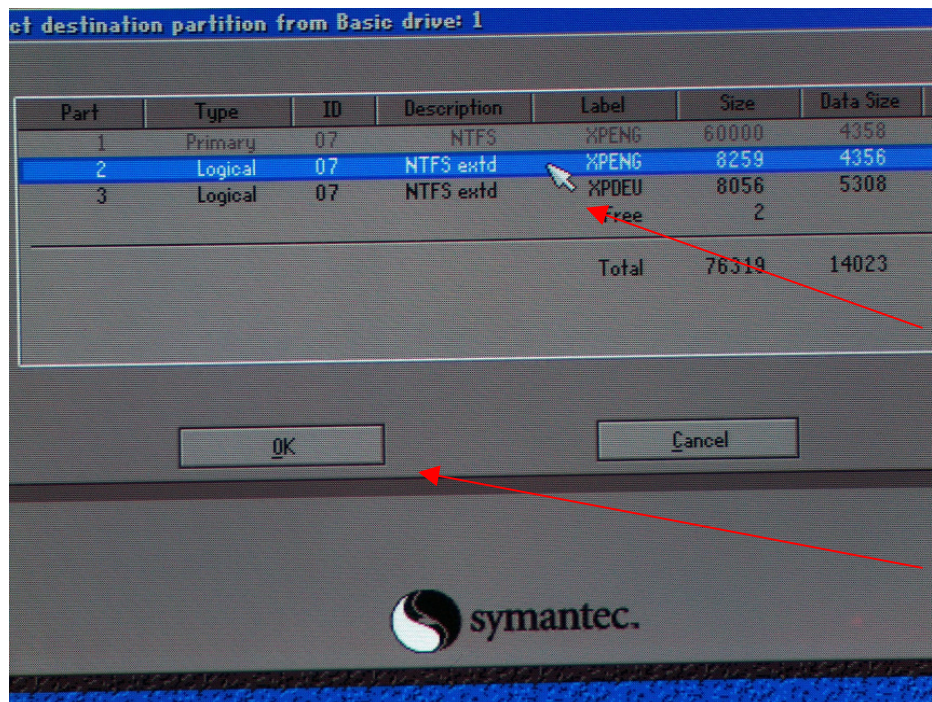


Click to
Ok

Here you select the drive where your partitions are. In this case there is only one harddrive active (main-harddrive)



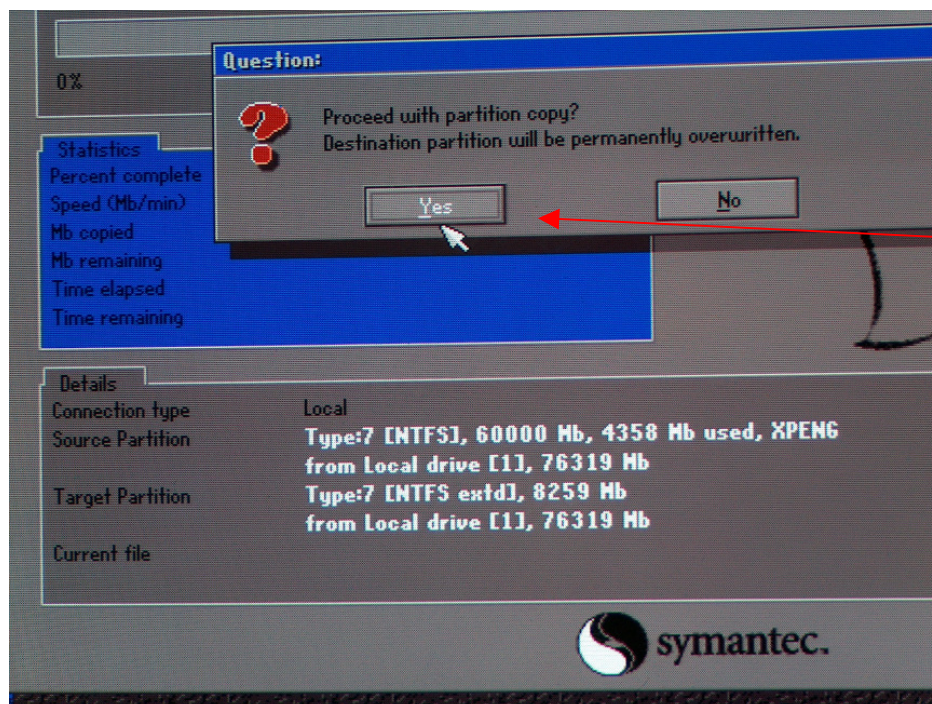
Select
Source-partition
(c:\ with 60GB)



Select destination-partition

For english-installation
XPENG
For german-installation
XPDEU

Click to OK



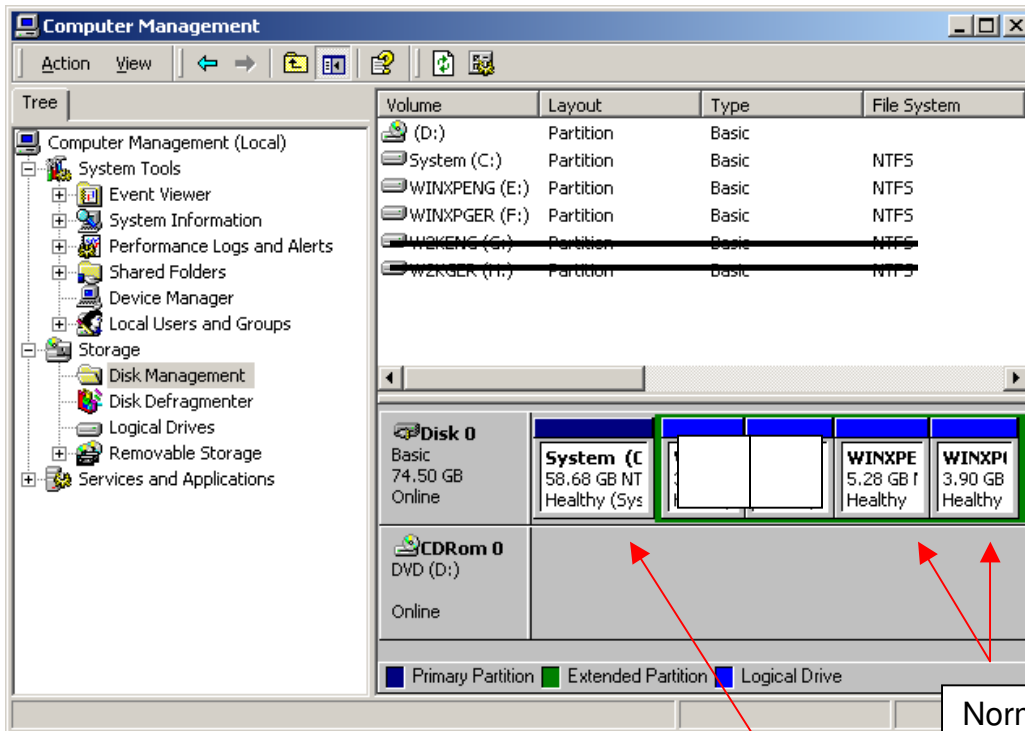
Start the copy-
process with YES

After the copy process you can reboot the pc.

After login into XP you have to make the backup-partitions XPENG and XPDEU invisible again

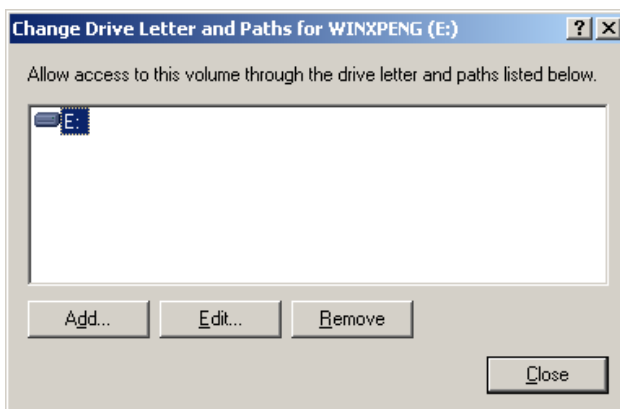
Part 2 Hiding of the backup-partitions

START – Settings - Control Panel - Administrative Tools – Computer Management – Disk Management

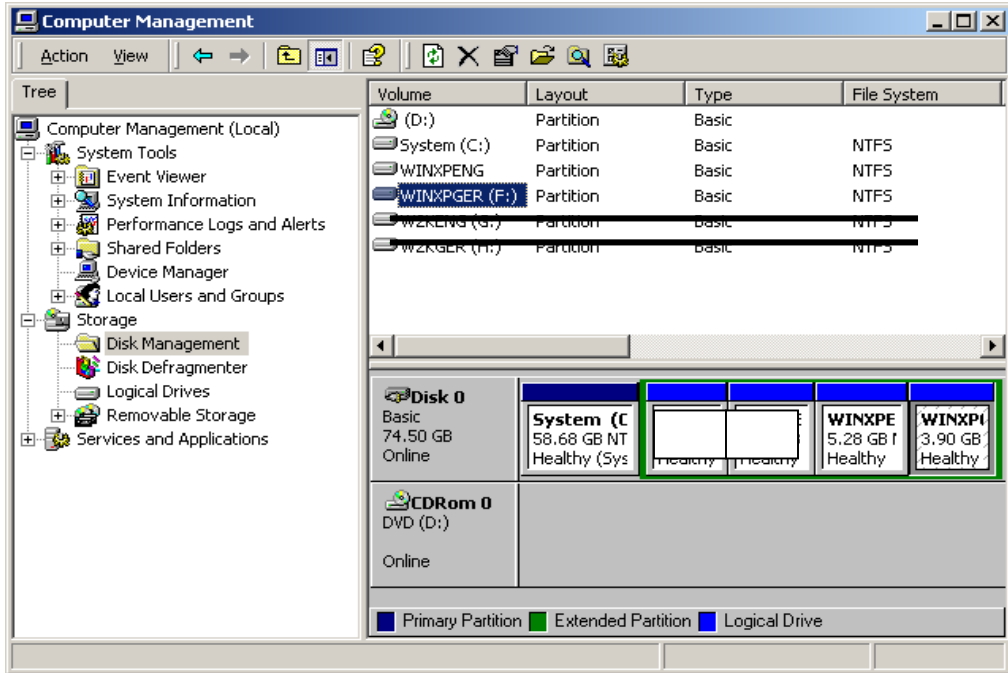
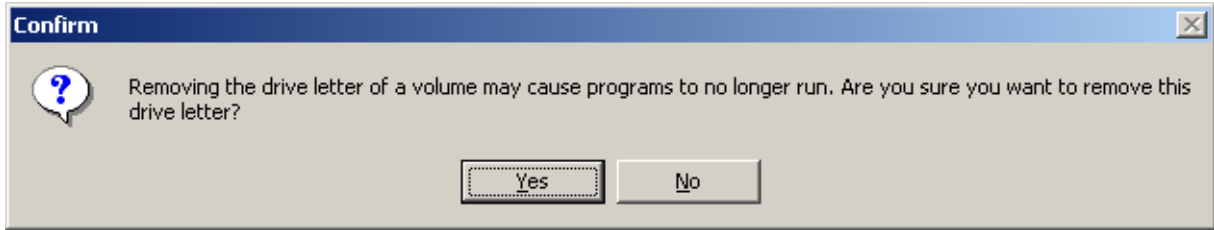


To hide partition E: do the following steps:

Mark partition E: and click right mouse button

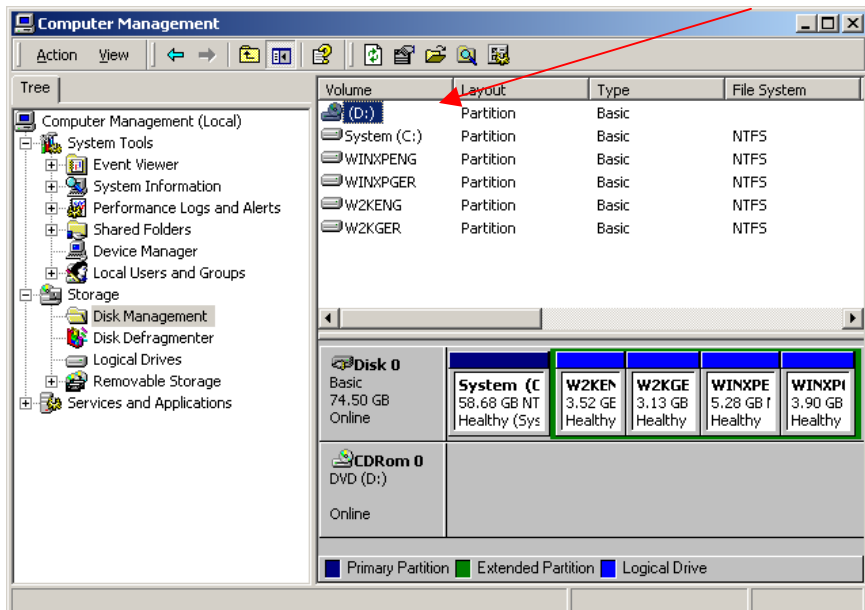


click to remove



Drive E: is not active anymore. The partition is still there but invisible in the Explorer.

Do the same procedure for all partition, but not for the partition C:
Be sure that the CD-Burner is Drive D: (otherwise change it to D:)



Now your backup is done !!!!!

Part 3:

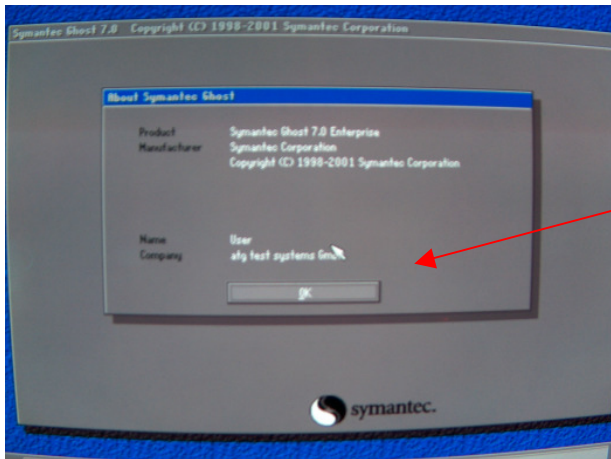
Cloning the harddrives after creating the backup (copy disk to disk):

After your backup is done, please shutdown the pc and insert the Ghost-boot-Floppy or the Ghost-boot-CD.

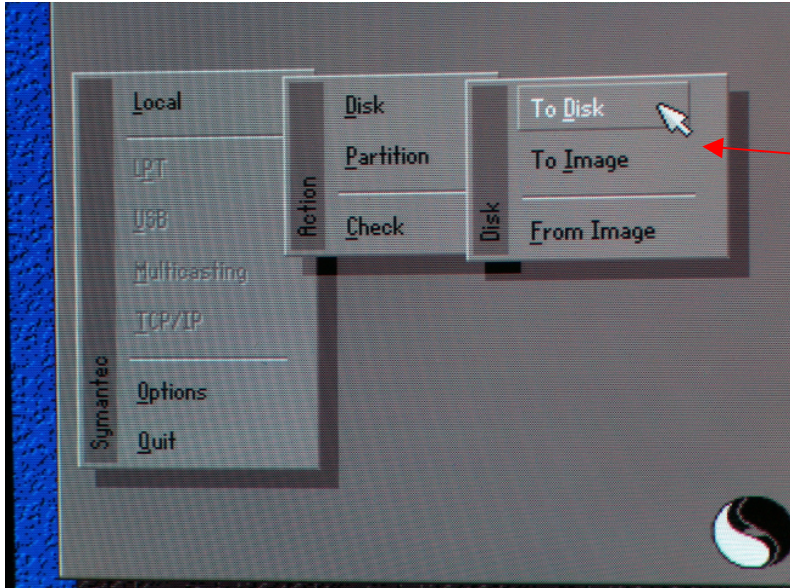
**Switch on the spare-harddrive on the rearside of the pc ("2. HD ON")
and activate the spare harddrive in the BIOS !!!!**

Make sure that your first Boot-device is Floppy-drive or CD-drive !!!!!

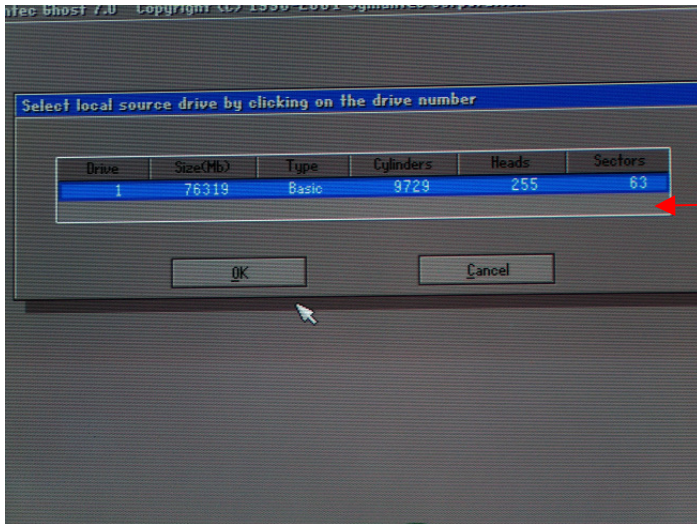
You get the Ghost-startup-screen



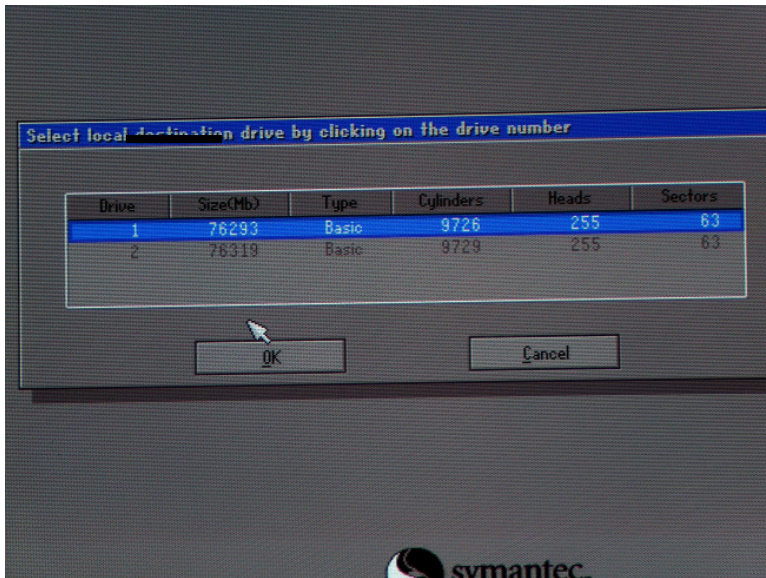
Click to
Ok !!!



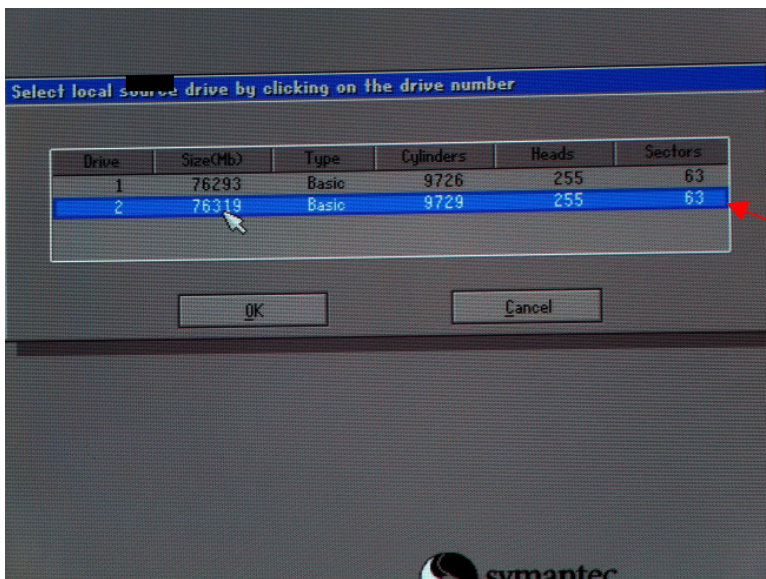
Local
Disk
To Disk



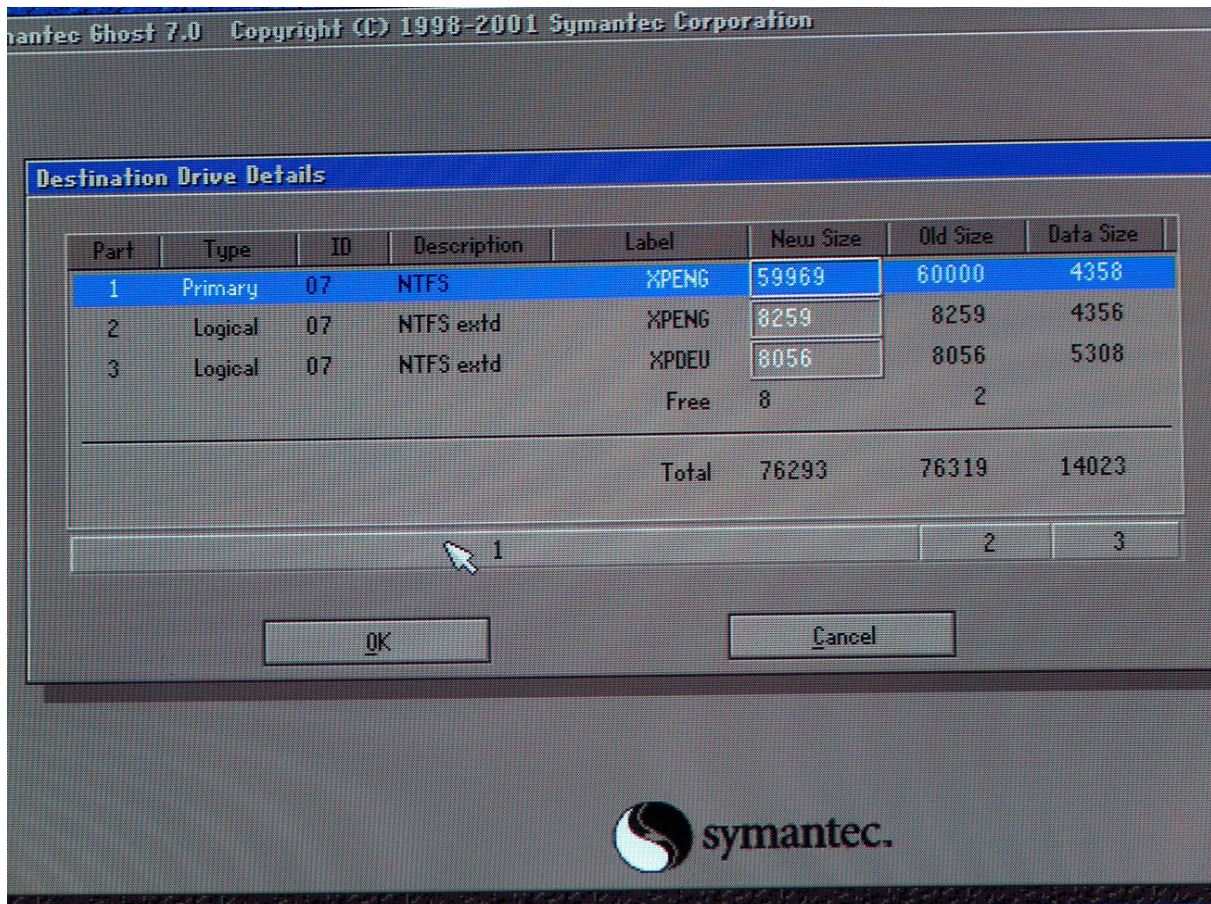
Click to OK



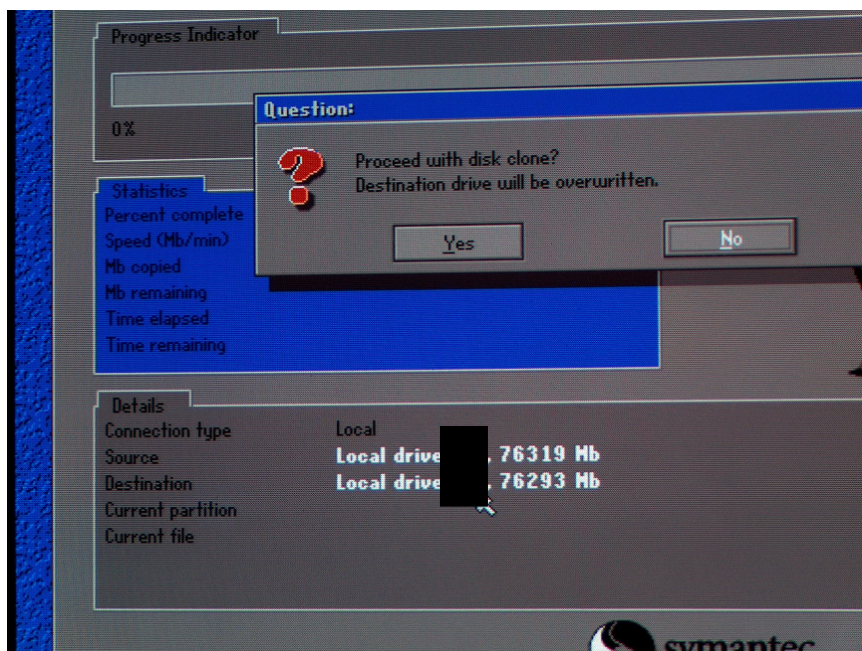
Select the source-drive

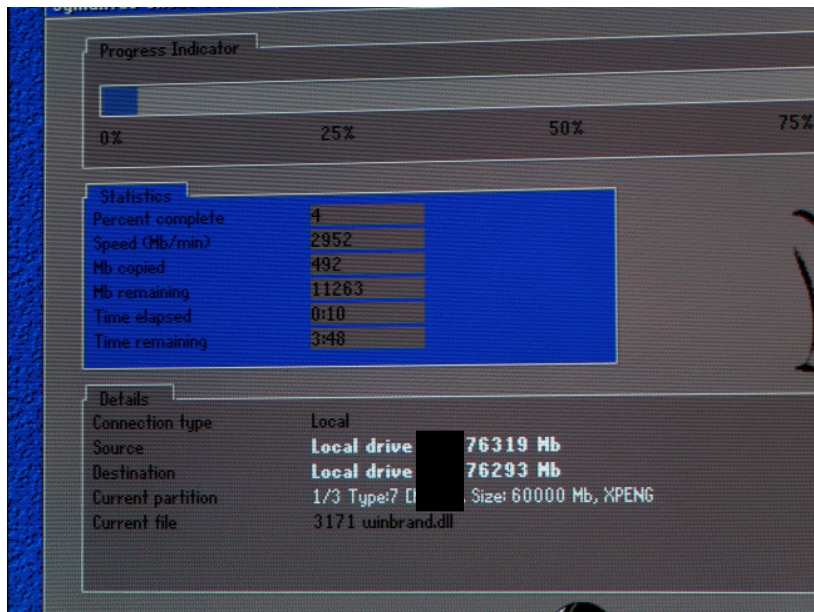


Select the destination-drive



Here you see an overview which data are on your destination-drive after the cloning-process. **When you are sure** the result is correct, click to OK !!!!





After the clone-process you can boot the spare-harddrive for controlling.

Remove the main-harddrive with the removable-frame and startup the pc.
You'll get a message that main-harddrive is not present, press F1 to continue.
Now you boot the spare-harddrive.
You have to hide the backup-partition like the description in Part 2.

After hiding the backup-partitions you can shutdown the pc.
Insert the main-harddrive in removable-frame and **lock with the key**.
Switch off the spare harddrive on the rear-side of the pc ("2.HD OFF").
Reboot the pc and deactivate the spare-harddrive in the BIOS (access the BIOS with F2 at startup).

Now you can boot the main-harddrive.....that's it !!!!